

Keep microphone muted



Keep your microphone on mute until you are ready to make a comment or ask a question

Begin by saying your name so I know who is speaking

Turn on your microphone to speak but remember to turn it off again once you have finished

Camera – it's up to you



Video is enabled, so unmute your camera if you would like to be seen in the meeting

Just remember, we can see you and your background during the meeting

Chat is enabled



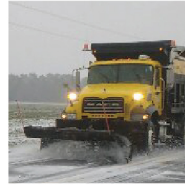
You can use the chat to make comments or ask questions

I will check the chat periodically, but you may want to draw my attention to it so I can answer promptly



NORTH CAROLINA

Department of Transportation



Brunswick County Comprehensive Transportation Supporting Maps Review

Chris Palsgrove/ Nazia Sarder/ Patrick Flanagan

May 27, 2021

Adopting Draft Maps Update

1. Highway Map
2. Transit and Rail Map
3. Bicycle and Pedestrian Maps



Supporting Maps

- Deficient Bridge Map



- Crash Map



- Environmental Maps



- Freight Map



- Volume/Capacity Map

Bridge Map

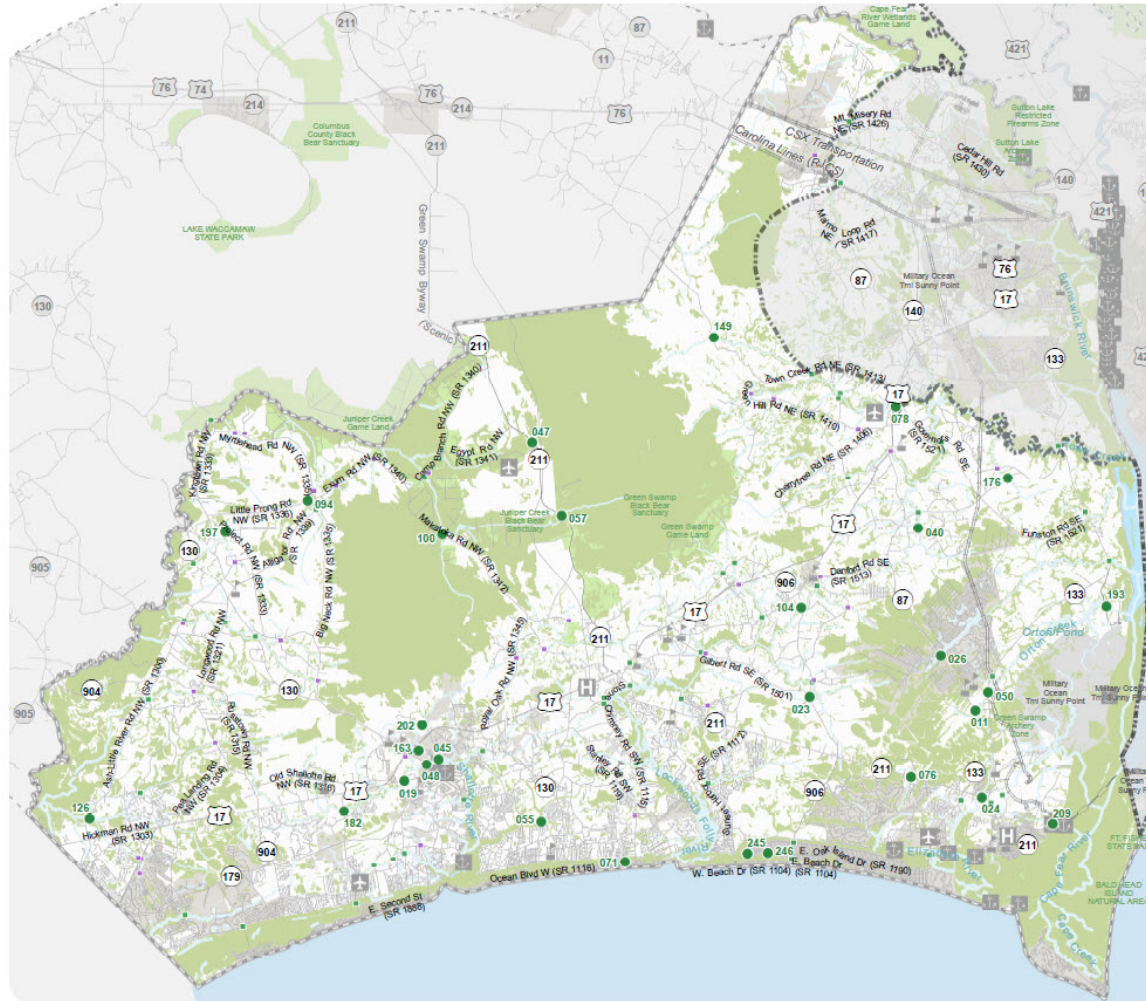



Figure 6
BRIDGE DEFICIENCIES





BRUNSWICK COUNTY
CTP Analysis and Information

Bridge Features

- Deficient Bridge
- Bridge
- Other Structure

Other Features

- Study Road
- GSATS MPO
- Cape Fear RPO

  
Full report at:
<https://tinyurl.com/BruCoCTP>

0 1 2 4 6 8
Miles

Sheet 3 of 3
Base map date: September 16, 2019

Legal Disclaimer
This product contains mapping data for informational and planning purposes only, and is subject to change. Users should review or consult the primary data sources to ascertain the usability of the information.

WORKING COPY
Plan Date: May 24, 2021

Crash Map



Figure 5
HIGH FREQUENCY CRASH LOCATIONS



BRUNSWICK COUNTY
CTP Analysis and Information
High Frequency Crash Features
(January 2014 - December 2018)

Total Crashes	Intersection	Road Section
5 - 9		
10 - 19		
20 - 29		
31 - 39		
40 - 49		
50 and above		

- Other Features**
- Study Road
 - GSATS MPO
 - Cape Fear RPO



Full report at: <https://tinyurl.com/BruCoCTP>

0 1 2 4 6 8 Miles

Sheet 2 of 3
Base map date: September 16, 2019

Legal Disclaimer
This product contains mapping data for informational and planning purposes only, and is subject to change. Users should review or consult the primary data sources to ascertain the usability of the information.

WORKING COPY
Plan Date: May 24, 2021

Environmental Maps

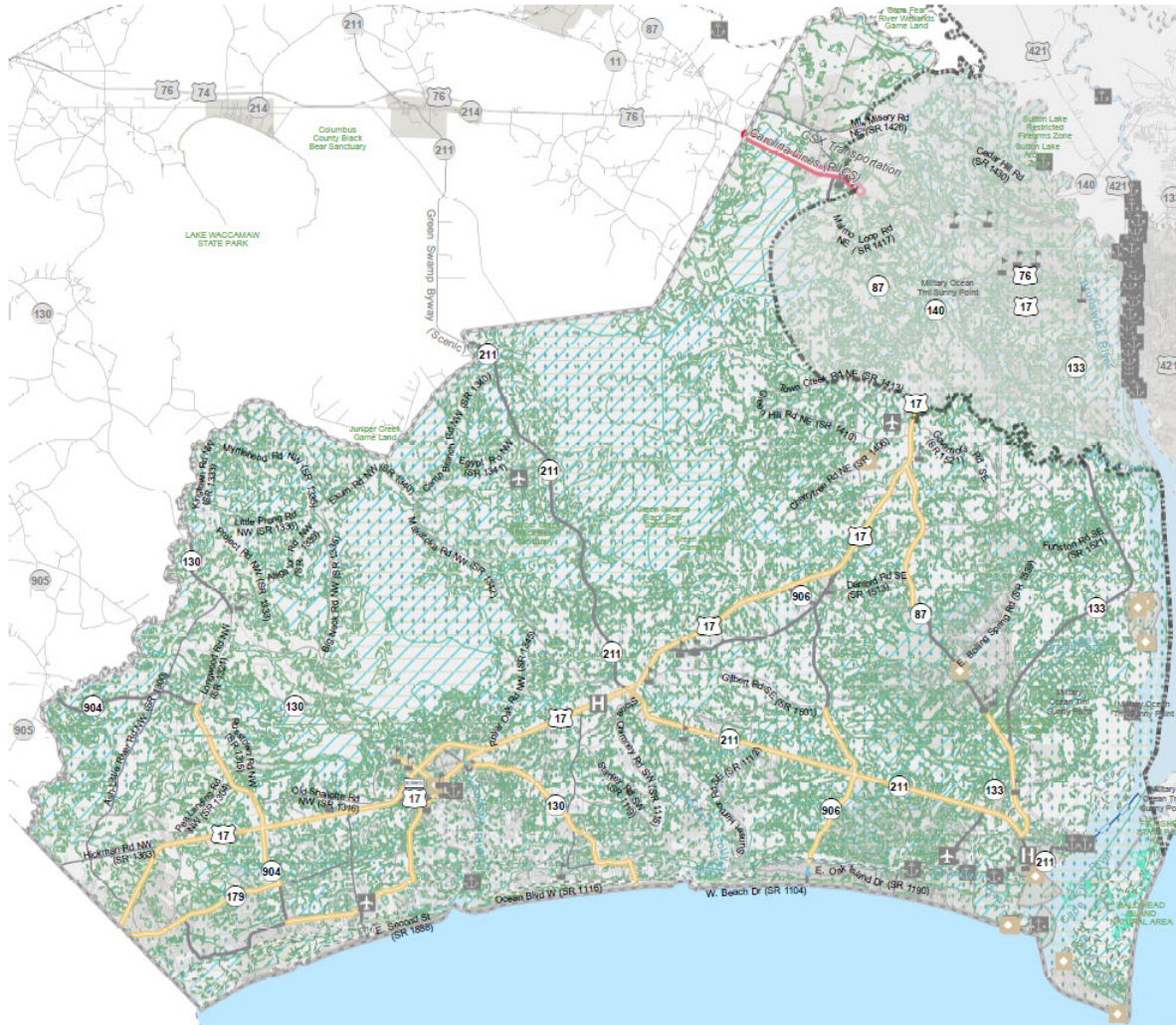


Figure 7
ENVIRONMENTAL FEATURES



BRUNSWICK COUNTY
CTP Analysis and Information
Primary Environmental Features Legend

- School - Colleges & Universities
- Hospital
- Historic Resources - National Register and Determined Eligible (Point)
- APNEP Submerged Aquatic Vegetation
- Targeted Local Watersheds - EEP
- Historic Resources - National Register and Determined Eligible (Polygon)
- National Wetlands Inventory (NWI)
- NC CREWS



Full report at:
<https://tinyurl.com/BruCoCTP>

0 1 2 4 6 8 Miles

Sheet 1.1 of 3
Base map date: September 16, 2019

Legal Disclaimer
This product contains mapping data for informational and planning purposes only, and is subject to change. Users should review or consult the primary data sources to ascertain the usability of the information.

WORKING COPY
Print Date: May 24, 2021

Environmental Maps

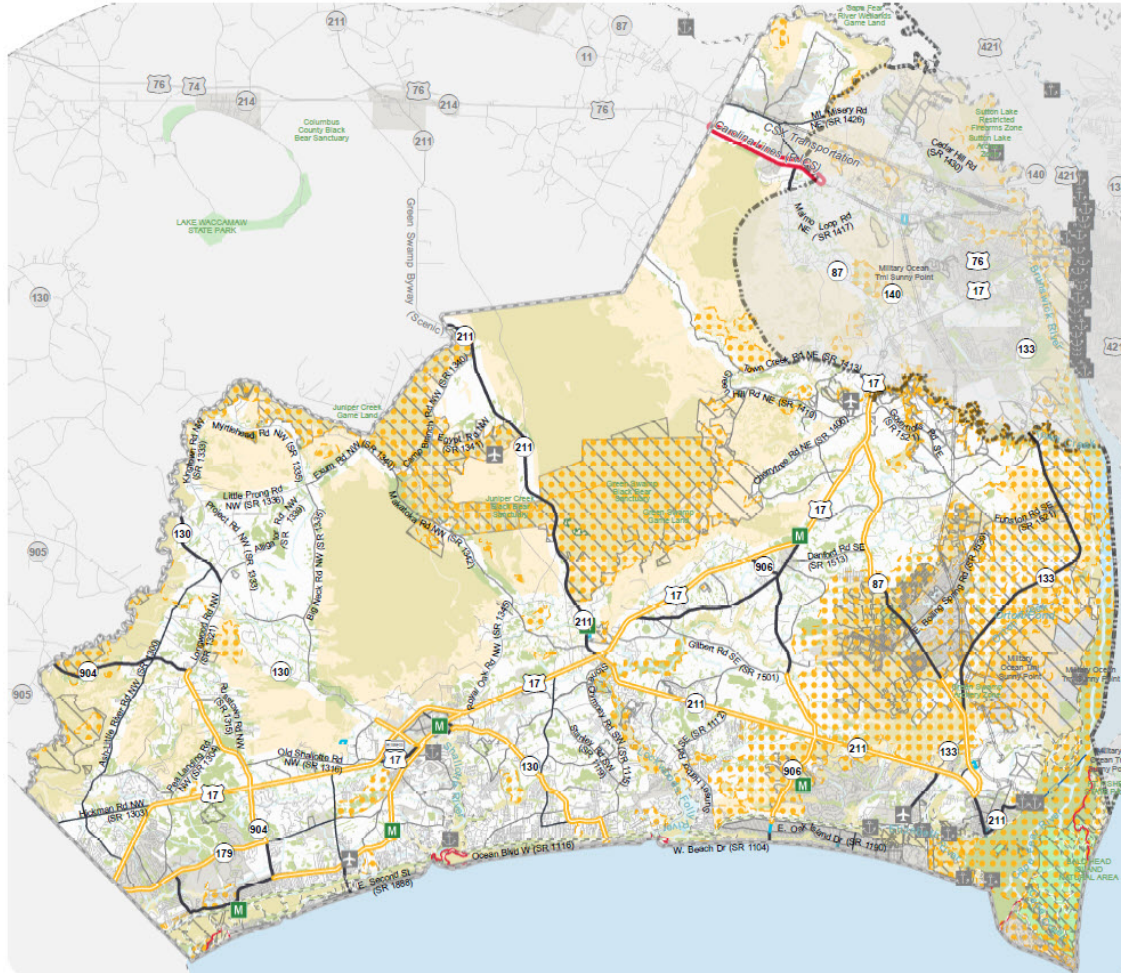


Figure 7
ENVIRONMENTAL FEATURES



BRUNSWICK COUNTY
CTP Analysis and Information
Primary Environmental Features Legend

- Mitigation Site - NCDOT Maintained
- Critical Habitat for Threatened and Endangered Species
- Critical Habitat for Threatened and Endangered Species
- Land and Water Conservation Fund (Recreation Projects)
- Natural Heritage Significant Areas
- Unique Wetlands
- Managed Areas
- Parks and Recreation
- Landscape Habitat Indicator Guilds



Full report at:
<https://tinyurl.com/BrCoCTP>

Sheet 1.2 of 3
Base map date: September 16, 2019

Legal Disclaimer
This product contains mapping data for informational and planning purposes only, and is subject to change. Users should review or consult the primary data sources to ascertain the usability of the information.

WORKING COPY
Plan Date: May 24, 2021

Environmental Map

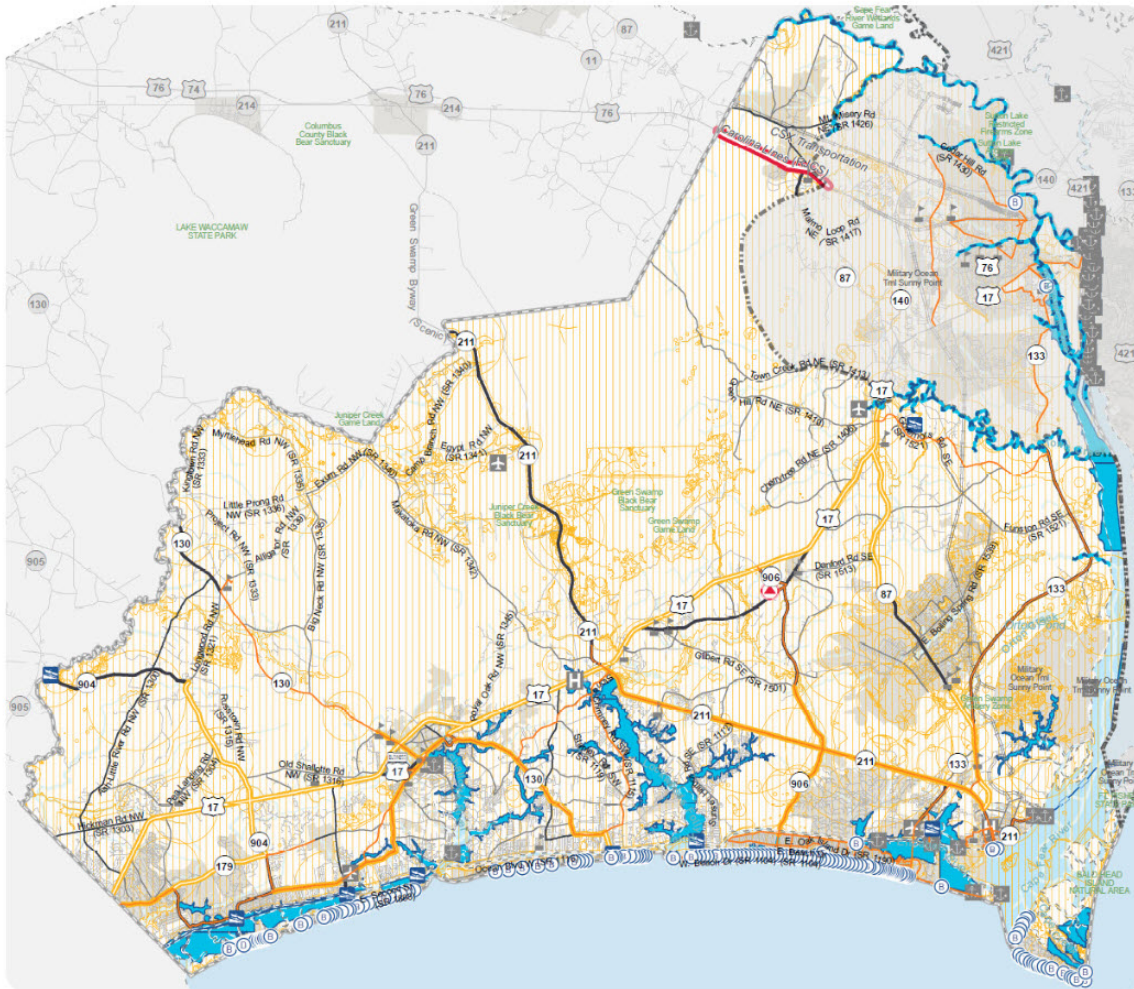


Figure 7
ENVIRONMENTAL FEATURES



BRUNSWICK COUNTY
CTP Analysis and Information

Environmental Features Legend

- Beach & Waterfront Access
- Boating Access - Public
- Emergency Operation Center
- Anadromous Fish Spawning Areas
- Bicycle Routes
- Wilmington Urban Area MPO
- FishNurseryAreas
- Natural Heritage Element Occurrences



Full report at:
<https://tinyurl.com/BruCoCTP>

0 1 2 4 6 8 Miles

Sheet 2.2 of 3

Base map date: September 16, 2019

Legal Disclaimer

This product contains mapping data for informational and planning purposes only, and is subject to change. Users should review or consult the primary data sources to ascertain the usability of the information.

WORKING COPY
Plan Date: May 21, 2021

Environmental Map

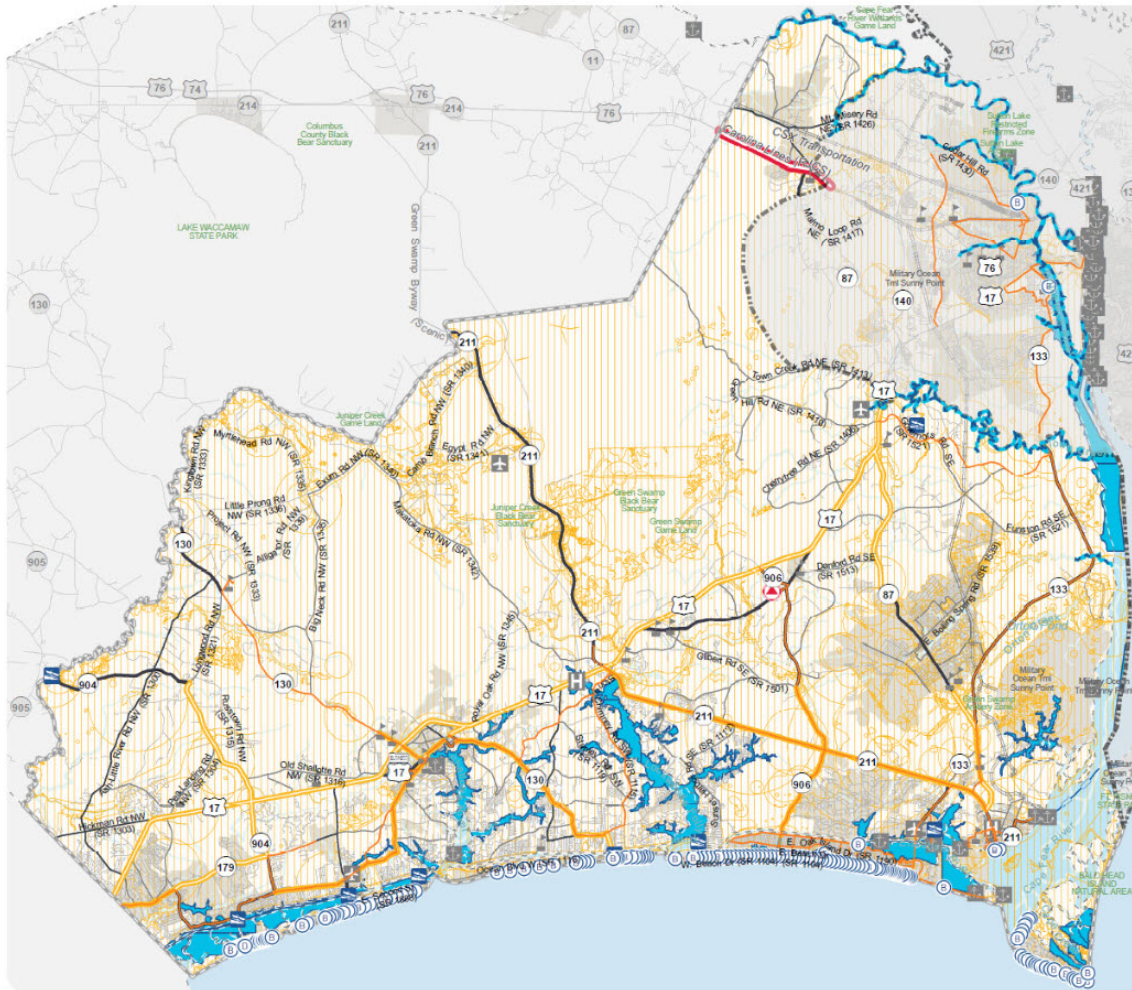


Figure 7
ENVIRONMENTAL FEATURES



BRUNSWICK COUNTY CTP Analysis and Information

Environmental Features Legend

- Beach & Waterfront Access
- Boating Access - Public
- Emergency Operation Center
- Anadromous Fish Spawning Areas
- Bicycle Routes
- Wilmington Urban Area MPO
- FishNurseryAreas
- Natural Heritage Element Occurrences



Full report at:
<https://tinyurl.com/BruCoCTP>

0 1 2 4 6 8 Miles

Sheet 2.2 of 3

Base map date: September 16, 2019

Legal Disclaimer

This product contains mapping data for informational and planning purposes only, and is subject to change. Users should review or consult the primary data sources to ascertain the usability of the information.

WORKING COPY
Plan Date: May 21, 2021

Freight Map

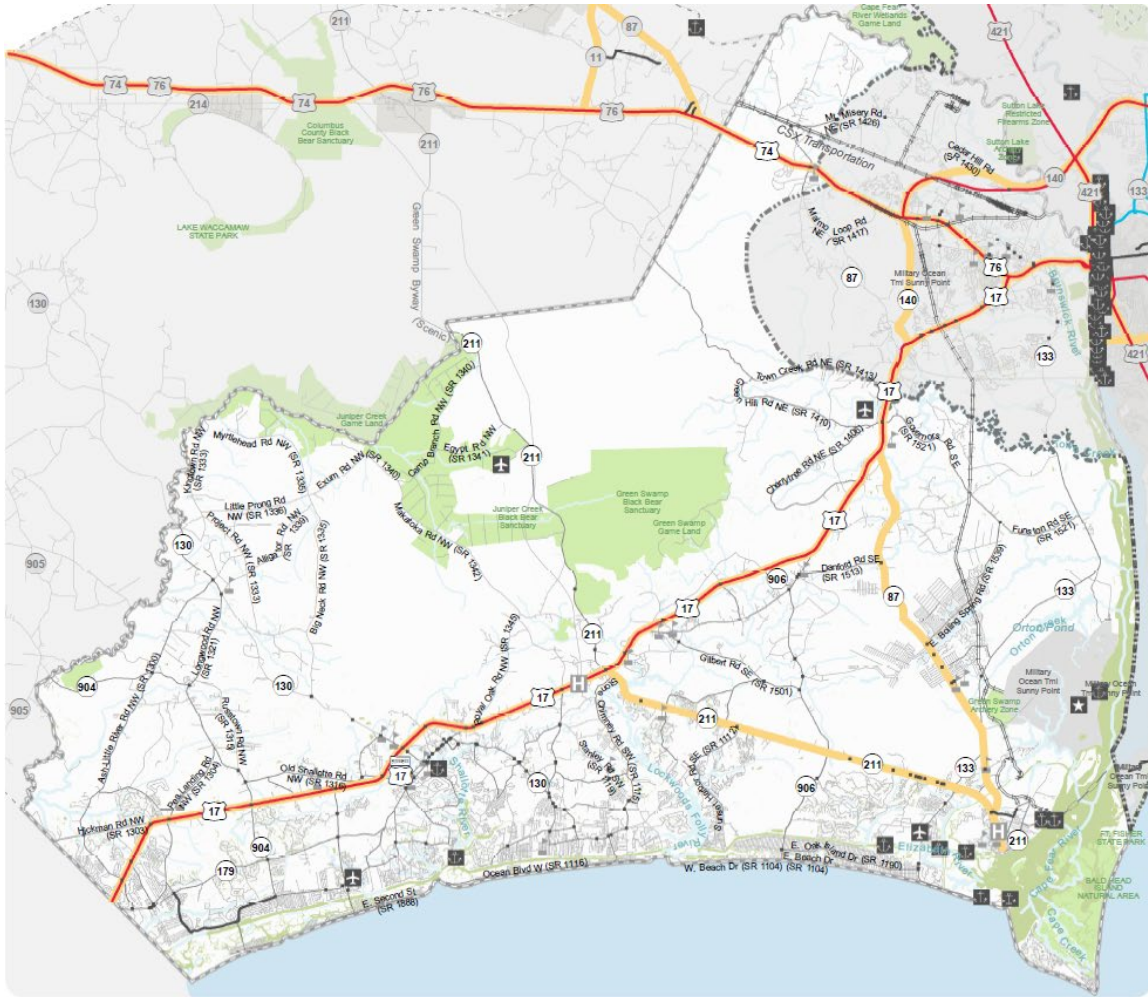


Figure 4
FREIGHT MAP



BRUNSWICK COUNTY CTP Analysis and Information

Freight Features

- Priority Highway Freight Network
- Active Rail
- High Crash Intersection
- Study Road

NCDOT Truck Network

- Restricted
- Reasonable Access
- Unrestricted

Intermodal Truck Terminals

- Air
- Rail
- Truck
- Port & Rail
- All Other Types

Other Features

- ✈ Airport
- ✈ Existing Freight Generator
- ✈ Future Freight Generator
- ✈ Military Facility
- ✈ Seaport
- ✈ Future Freight Generator
- ✈ Military Installation



Full report at:
<https://tinyurl.com/BrCoCTP>

0 1 2 4 6 8 Miles

Sheet 1 of 3

Base map date: September 16, 2019

Legal Disclaimer

This product contains mapping data for informational and planning purposes only, and is subject to change. Users should review or consult the primary data sources to ascertain the usability of the information.

WORKING COPY
Plan Date: April 30, 2021

NCDOT Roadway Capacity

Some of the factors that determine a roadways capacity:

- Facility Type
 - Freeway, Expressway, Boulevard, Major Thoroughfares, Minor Thoroughfares, Rural 2 Lane Highway
- Area Type
 - Rural, Suburban, or Urban
- Geographical Area
 - Coastal, Piedmont, Mountain (level terrain) or Mountain (rolling terrain)
- Number of lanes per direction
- Speed
- Lane width
- % of Truck traffic for Freeways and Expressways

BY V/C Map

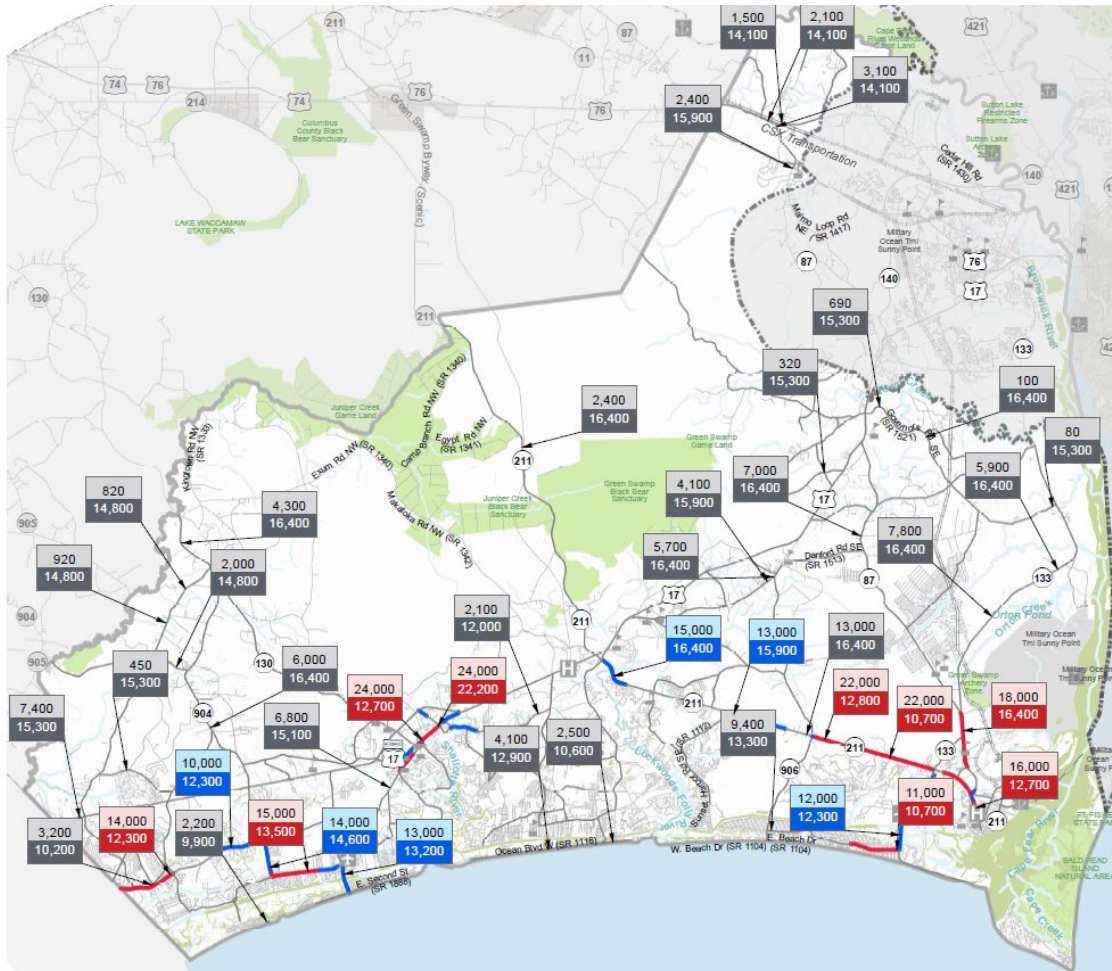


Figure 2
2017 VOLUME AND CAPACITY DEFICIENCY



BRUNSWICK COUNTY
CTP Analysis and Information

Volume and Capacity Ratio Features
(Base Year 2017)

- 2017 Volume
Capacity Under Capacity
(0-0.79)
- 2017 Volume
Capacity Near Capacity
(0.80-0.99)
- 2017 Volume
Capacity Over Capacity
(1.00+)

Other Features

- Studied Roads
- GSATS MPO
- Cape Fear RPO



Full report at:
<https://tinyurl.com/BruCoCTP>



Sheet 1 of 2

Base map date: September 16, 2019

Legal Disclaimer

This product contains mapping data for informational and planning purposes only, and is subject to change. Users should review or consult the primary data sources to ascertain the usability of the information.

WORKING COPY
Plan Date: April 30, 2021

FY V/C Map

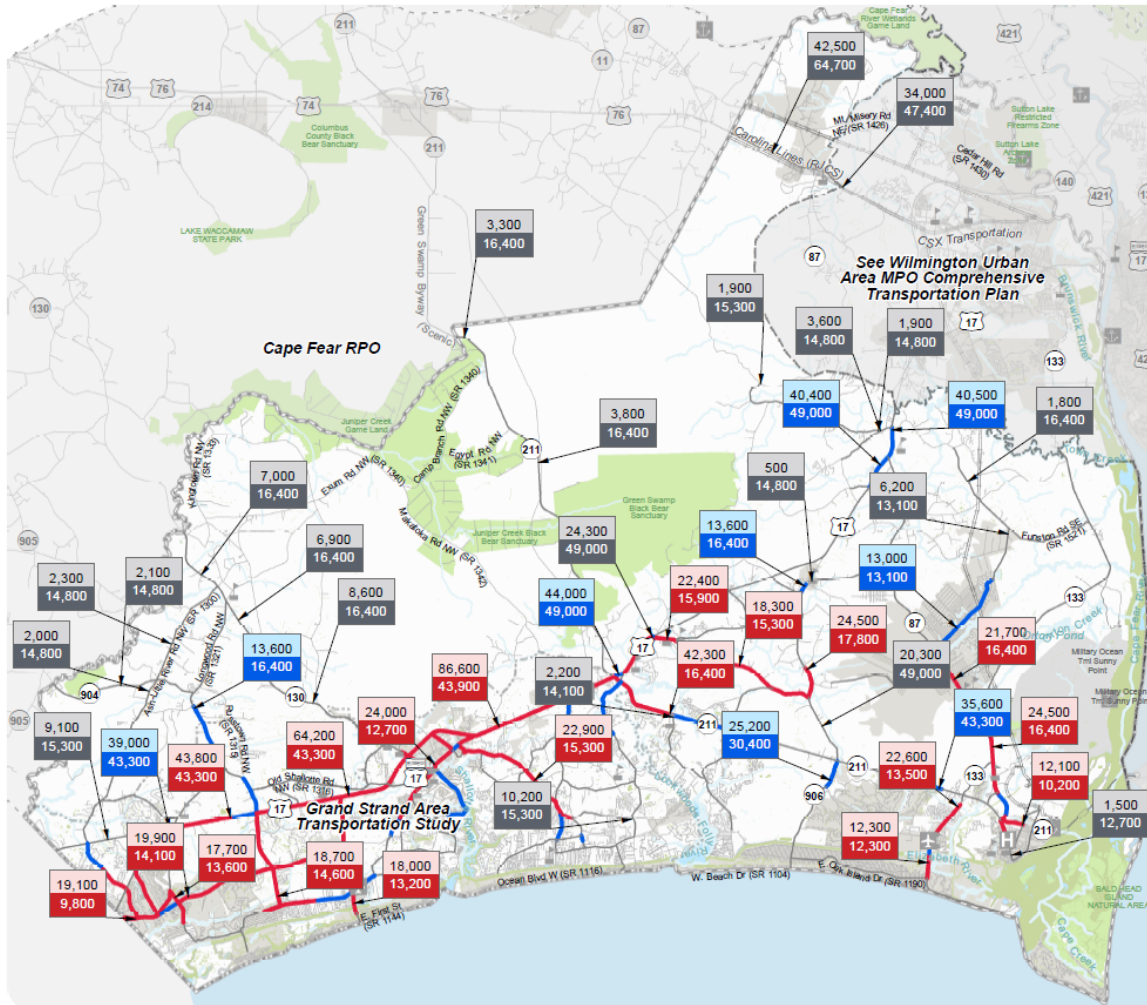


Figure 2
2045 VOLUME AND CAPACITY DEFICIENCY



BRUNSWICK COUNTY CTP Analysis and Information

Volume and Capacity Ratio Features
(Future Year 2045)

- 2045 Volume Capacity Under Capacity (0-0.79)
- 2045 Volume Capacity Near Capacity (0.80-0.99)
- 2045 Volume Capacity Over Capacity (1.00+)

Other Features

- Studied Roads
- GSATS MPO
- Cape Fear RPO



Full report at:
<https://tmyurl.com/BrnCoCTP>



Sheet 2 of 2

Base map date: September 16, 2019

Legal Disclaimer

This product contains mapping data for informational and planning purposes only, and is subject to change. Users should review or consult the primary data sources to ascertain the usability of the information.

WORKING COPY
Plan Date: May 27, 2021

Next Steps

 Survey Results

 Analysis Maps

 Next Meeting – June 24

Adjourn

Contacts:

Patrick Flanagan

Cape Fear Council of Governments Regional Planner

910.395.4553 x 214 pflanagan@capefearcog.org

Chris Palsgrove

NCDOT Transportation Planning Division Engineer

919.707.0989 cdpalsgrove@ncdot.gov

Nazia Sarder

NCDOT Transportation Planning Division Engineer

919.707.0980 nsarder@ncdot.gov

THANK
YOU!